



SHEFFIELD CITY COUNCIL Cabinet Highways Committee Report

14

Report of: Simon Green, Executive Director, Place

Date: 13th October 2011

Subject: Edward Street Park Project

Author of Report: Matt Hayman, City Development Division

Summary:

This report sets out essential highway improvement works associated with the delivery of the Edward Street Park project. The design was developed following feasibility work and public consultation. Planning permission for the park design was granted in April 2011 and will require closure of parts of Edward Street and Upper Allen Street to general traffic.

Approval is sought for the design and construction of highways works associated with Edward Street Park.

Reasons for Recommendations:

The highways design will contribute to improving the environment and setting for the park, encouraging greater numbers of local residents, workers and visitors to use the space. It is anticipated that the completed park will also provide a catalyst for further investment in the area.

Recommendations:

Approve the proposed highway works associated with the Edward Street Park project; and

Background Papers:

Category of Report: OPEN

Statutory and Council Policy Checklist

Financial implications
NO Cleared by: Matthew Bullock on 21.9.11
Legal implications
NO Cleared by: Julian Ward on 28.9.11
Human rights implications
NO
Tackling Health Inequalities implications
NO
Equality of Opportunity implications
NO Cleared by: Ian Oldershaw on 19.9.11
Environmental and Sustainability implications
NO
Economic impact
NO
Community safety implications
NO
Human resources implications
NO
Property implications
NO
Area(s) affected
Central Community Assembly
Relevant Scrutiny Board if decision called in
Culture, Economy & Sustainability
Is the item a matter which is reserved for approval by the City Council?
NO
Press release
NO

EDWARD STREET PARK PROJECT
RESULTS OF PUBLIC AND TRAFFIC REGULATION ORDER CONSULTATION

1.0 SUMMARY

1.1 This report sets out essential highway improvement works associated with the delivery of the Edward Street Park project. The design was developed following feasibility work and public consultation. Planning permission for the park design was granted in April 2011 and will require closure of parts of Edward Street and Upper Allen Street to general traffic.

1.2 Approval is sought for the design and construction of highways works associated with Edward Street Park.

2.0 WHAT DOES THIS MEAN FOR THE PEOPLE OF SHEFFIELD

2.1 These works and the associated Traffic Regulation Order (TRO) and Road Closure Order (RCO) will allow the delivery of the approved Edward Street Park design to enhance and expand an underused open space in the city centre.

2.2 A safer environment will be created for users of the new park including local residents, workers and visitors to the area.

2.3 The proposals will contribute to meeting the City Council's corporate plan ambition of 'Protecting and enhancing the environment' by contributing to the priority of 'Improving Parks and Open Spaces'.

3.0 OUTCOME AND SUSTAINABILITY

3.1 General traffic access will be prevented from passing through the park by the proposed access restriction. Servicing will be allowed to but, the speed of vehicles will be controlled by the careful choice of paving materials and its proximity to street furniture.

3.2 The project includes new tree planting including 4 new trees in the highway on Edward Street.

4.0 REPORT

Background

4.1 Since the adoption of the St. Vincent's Action Plan 2004 (SVAP) there has been considerable investment in new residential and office developments in the immediate area. It is estimated that there are up to 3000 new residents now living in the area.

4.2 This previously industrial part of the city centre requires new/improved open space for these new residents and workers. The proposed site is central to a

growing community providing views to the north of the city (Upper Don Valley) and beyond. The action plan and subsequent feasibility and consultations identified a need for improved open space in this location and the proposals received strong support from local residents, workers, developers and businesses. The consultation included a presentation to the Edward Street Tenants and Residents Association (TARA).

- 4.3 The project is being delivered by the City Development Division and is funded by accumulated Section 106 contributions from new housing development and European Regional Development Fund programme, Interreg VALUE Plus. It will provide a larger, more useable/accessible space for local residents and is part of a strategy to encourage future investment and development in the area. The site is owned by the City Council and maintained by Sheffield Homes. The location of the site is shown at Appendix A.

Park Design

- 4.4 Currently, the site is an old fashioned ball games court with marginal/unused grass areas. The space is severed by Edward Street and feels insecure especially at night due to the enclosing walls around the old ball games court and the poor lighting levels. The site is in a run down state with little to encourage its active use for relaxation and general recreation. Nevertheless it is located once more at the heart of a densely populated urban area with large numbers of children and students who have virtually no other garden or green space other than that within Edward Street flats. The park project will provide:

- New pedestrian routes/stepped routes
- Enhanced environment for residents
- Improved Street and amenity lighting
- Enhanced ball games space
- New Performance/Event Space
- Reduced traffic on Edward Street with the introduction of one way system and reduction in highway width
- New seating
- New planting/trees
- Public Art

Planning permission was granted in April 2011 for the design shown at Appendix B.

Highway Design

- 4.5 The proposed highway design and associated TRO and RCO are key elements of the design for Edward Street Park. A plan of the proposed highway works is attached at Appendix C. The work includes:
- Realignment and reduction in the width of the highway on Edward Street
 - Resurfacing
 - New lights
 - Bollards
 - Widening of footway on Edward Street and introduction of tree grills and trees;

- Widening of footway on Edward Street and
 - Provision of a servicing bay for businesses fronting Edward Street (Tesco, and vacant unit).
 - Creation of a one-way system with restricted access for permit holders
- 4.6 The TRO was advertised on 29th July 2011 to create a one way system with restricted access for permit holders (issued to premises within the park boundary), refuse collection, emergency and maintenance vehicles. Entry to the park will be formally signed as a Pedestrian Zone. The TRO plan is attached at Appendix D.
- 4.7 The emergency services, bus operators and Veolia were consulted as normal with no adverse comment being received. The public and surrounding commercial premises were contacted by letter inviting comment or objection between 29th July 2011 to 19th August 2011. No comments were received.
- 4.8 The proposed realignment of Edward Street requires a Road Closure Order for small areas of highway land that are no longer required. An application to the Secretary of State under Section 247 of the Town & Country Planning Act 1990 has been made. The Order is being made by the Department for Transport who will ultimately be responsible for confirming the S247 Closure Order; provided there are no objections. Notices advertising the proposed closure were posted on site on 14th September 2011 with a 28 day objection period. A verbal update on any comments received to the closure order will be given at the meeting. The order plan is attached at Appendix E.

Relevant Implications

- 4.9 The project budget was included in the capital programme approved at Cabinet on 27th April 2011. The budget makes provision for the cost of proposed highways works outlined in this report. The ERDF variation highlighted at 4.1.3 has not yet been approved. Cabinet approval is expected on 9th November 2011
- 4.10 An equality impact assessment has been completed for this project. It concludes that the project will be of universal benefit to all users regardless of age, sex, race, faith, disability, sexuality, etc. However, it will have particular positive benefits for the disabled, elderly and carers by improving access to this open space. Also to women, vulnerable adults and the young through improved street and amenity lighting and families with children due to improved play/activity areas. In addition the project will contribute positively to community cohesion in an area with a diverse and mixed tenure population.
- 5.0 ALTERNATIVE OPTIONS CONSIDERED
- 5.1 **Do nothing** - The option of leaving the existing highway as it is would not allow for the introduction of new pedestrian routes and the creation of a safer environment for pedestrians and users of the park.
- 5.2 **Full Road Closure** – It was accepted that service access for the Tesco store on Edward Street must go through the park. It is expected that any future servicing needs on Upper Allen Street and Edward Street, larger than 7.5 tonnes, will also need to run through the park.

6.0 REASONS FOR RECOMMENDATIONS

- 6.1 The highways design will contribute to improving the environment and setting for the park, encouraging greater numbers of local residents, workers and visitors to use the space. It is anticipated that the completed park will provide a catalyst for further investment in the area.

7.0 RECOMMENDATIONS

- 7.1 Approve the proposed highway works associated with the Edward Street Park project.

Simon Green
Executive Director, Place
22nd September 2011

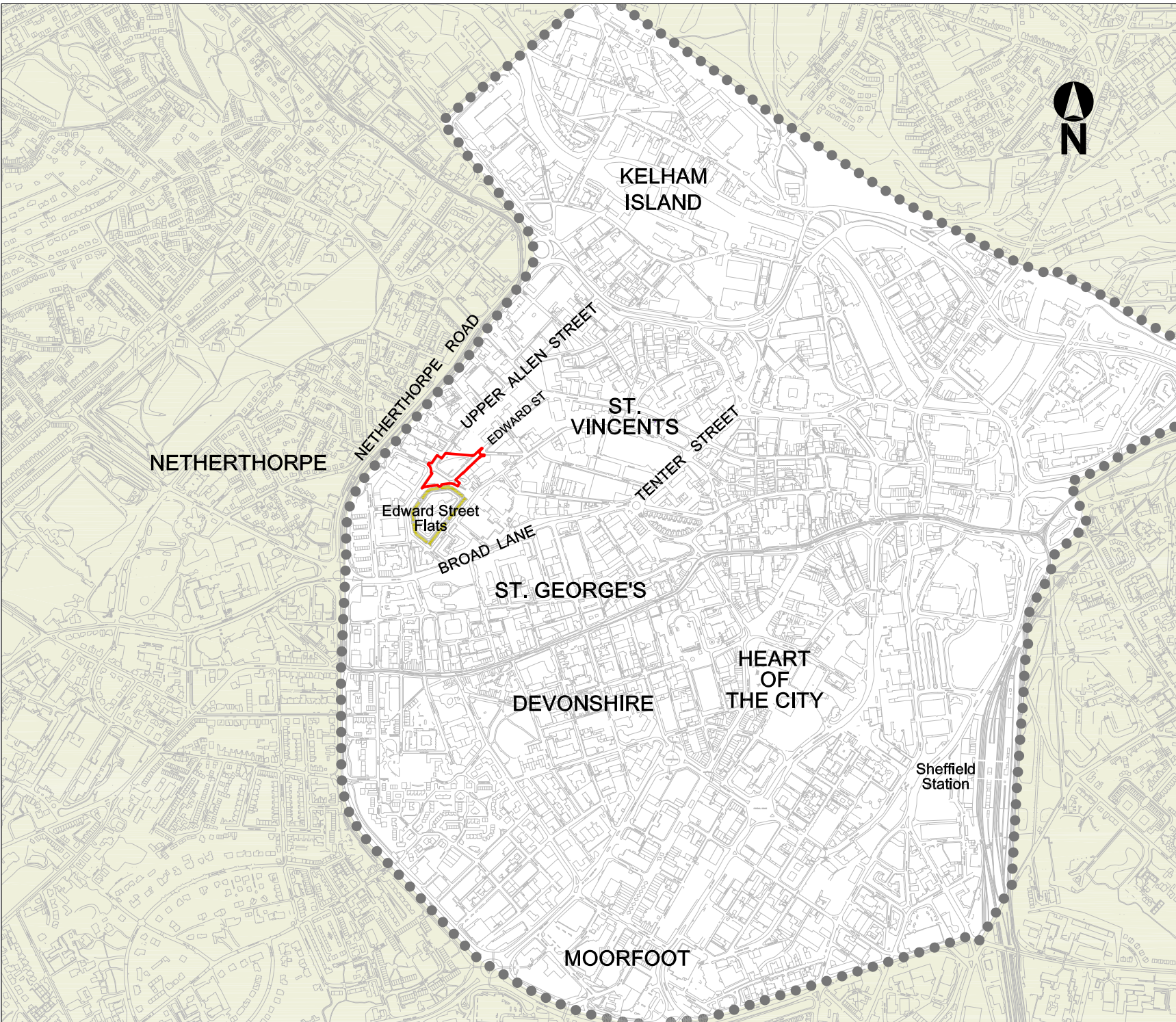
NOTES / REVISIONS:

Copyright Sheffield City Council. All rights reserved in Chapter IV of the Copyright, Designs and Patents Act 1988 have been generally asserted

This map is reproduced from Ordnance Survey material with the permission of Ordnance Survey on behalf of the Controller of Her Majesty's Stationery Office. © Crown Copyright. Unauthorised reproduction infringes Crown copyright and may lead to prosecution or civil proceedings. 10018816. 2009



EDWARD STREET PARK SITE BOUNDARY



SHEFFIELD CITY COUNCIL
DEVELOPMENT SERVICES
Director
L STURCH, MRTPI

SCHEME:

TITLE:
**APPENDIX A
PROPOSED SITE BOUNDARY**

COMMITTEE:

SCALE:

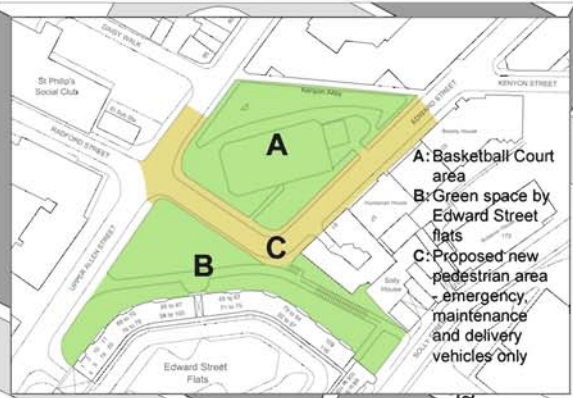
Dr	Tr	Ckd	Date:	Micro:
----	----	-----	-------	--------

Drawing No:

CAD FILE NAME:

There is an opportunity to create a new park by joining up the areas of green space on both sides of the road (between Radford Street and Edward Street). This will involve closing the road (Area C) to all traffic except emergency access and maintenance vehicles.

- A: Basketball Court area
- B: Green space by Edward Street flats
- C: Proposed new pedestrian area - emergency, maintenance and delivery vehicles only



- 1 NEW EVENTS ARENA**
- Artificial 'green' surface
 - New lighting
 - New art fence to lower edge
 - New basket ball hoops at either end
 - Grass terraces overlooking the arena
 - Electricity plug in point for events



- 2 CAFE TERRACE AND MARKET SPACE**
- Hard surface area for outdoor cafe tables
 - Space for occasional markets or support space for events in the central events arena
 - Adjoining sitting walls
 - New trees



- ART FEATURES AND SITTING WALLS**
- New public art features to create focal points at entrances to the park
 - Sitting walls incorporating public art

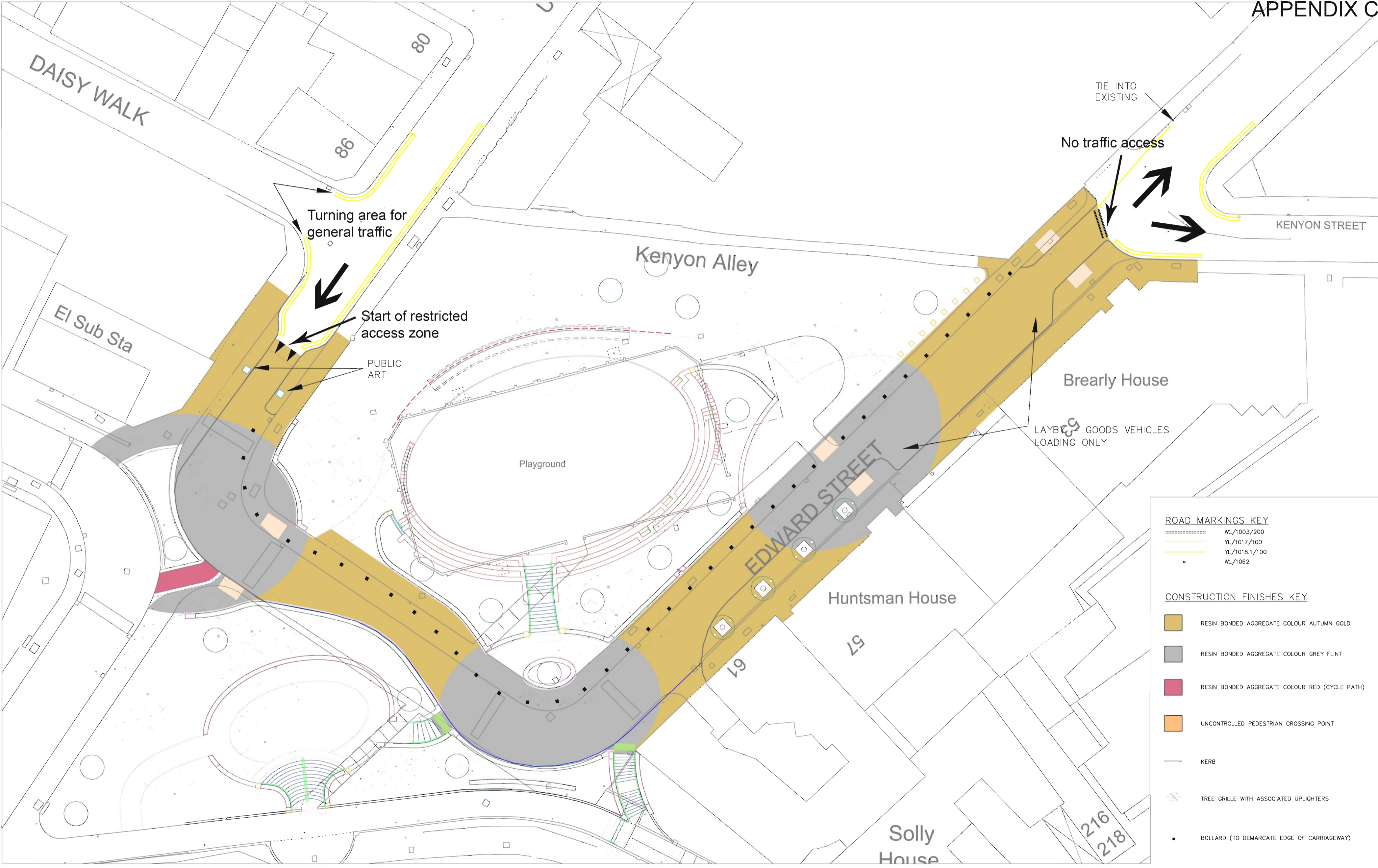


- NEW PLANTING**
- New semi-mature trees to replace trees removed adding seasonal variety
 - New flower borders to add colour and attract wildlife
 - Green walls: new 'bio-engineered' green walls



- NEW LIGHTING**
- New column lighting to give good 'white light' and improve safety
 - Feature lighting to include colour uplighting of trees and lighting of public art features





- ROAD MARKINGS KEY**
- WL/1003/200
 - YL/1017/100
 - YL/1018.1/100
 - WL/1062
- CONSTRUCTION FINISHES KEY**
- RESIN BONDED AGGREGATE COLOUR AUTUMN GOLD
 - RESIN BONDED AGGREGATE COLOUR GREY FLINT
 - RESIN BONDED AGGREGATE COLOUR RED (CYCLE PATH)
 - UNCONTROLLED PEDESTRIAN CROSSING POINT
 - KERB
 - ⊗ TREE GRILLE WITH ASSOCIATED UPLIGHTERS
 - BOLLARD (TO DEMARCAT EGE OF CARRIAGEWAY)


STREET FORCE DESIGN & BUILD DIVISION
 2-10 CARBROOK HALL ROAD
 SHEFFIELD S9 2DB
 Tel. (Reception) 0114-273-6320 Fax. 0114-273-6182
 J CHARLTON BTEch, CEng MICE
 Head Of Street Force
 A Service Area of the Directorate of Place,
 Sheffield City Council

Do not scale from this drawing Any omissions to be reported immediately If in doubt, ask	DRAWN ATB 09.09.2011	TRACED CAD 09.09.2011	CHECKED
--	----------------------------	-----------------------------	---------

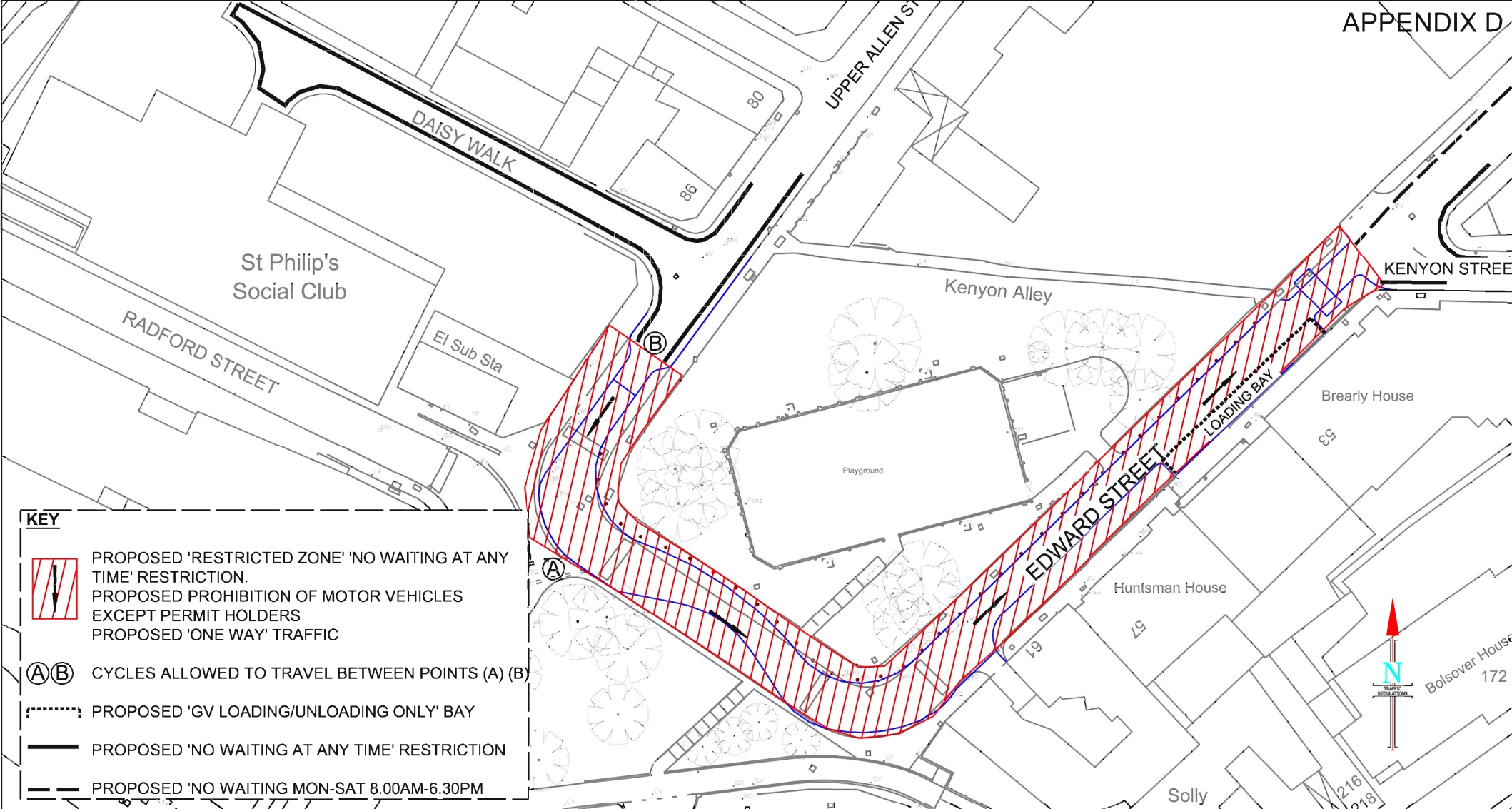
Notes
 This map is reproduced from Ordnance Survey material with the permission of Ordnance Survey on behalf of the Controller of Her Majesty's Stationery Office. © Crown Copyright. Unauthorised reproduction infringes Crown copyright and may lead to prosecution or civil proceedings. 10018816. 2009

Rev	Date	Content	Signed	Client
				SHEFFIELD CITY COUNCIL
				EDWARD STREET PARK
				GENERAL ARRANGEMENT HIGHWAYS





Drawing No. HD/CD02983/P6
 Scale 1:200
 Date September 2011

Drawing Title: GENERAL ARRANGEMENT HIGHWAYS
 Scale: 1:200
 Date: September 2011



DRAWING NO. HD/CD02983/P6



KEY

-  PROPOSED 'RESTRICTED ZONE' 'NO WAITING AT ANY TIME' RESTRICTION.
PROPOSED PROHIBITION OF MOTOR VEHICLES EXCEPT PERMIT HOLDERS
PROPOSED 'ONE WAY' TRAFFIC
- (A)(B)** CYCLES ALLOWED TO TRAVEL BETWEEN POINTS (A) (B)
-  PROPOSED 'GV LOADING/UNLOADING ONLY' BAY
-  PROPOSED 'NO WAITING AT ANY TIME' RESTRICTION
-  PROPOSED 'NO WAITING MON-SAT 8.00AM-6.30PM

DEVELOPMENT SERVICES
TRANSPORT & HIGHWAYS DIVISION
TRAFFIC SECTION
 2-10 CARBROOK HALL ROAD
 SHEFFIELD S9 2DB

E-mail Traffic.Regis@Sheffield.gov.uk
 Director: L Sturch M.R.T.P.I.
 Development Services

A Service Area of the Directorate Place
 Sheffield City Council

• Do not scale from this drawing
 • Any errors/omissions to be reported immediately
 • If in doubt,
 • Crown copyright. All rights reserves. 10018816. 2010

DRAWN	NC	CHECKED
	14.06.11	


Client
SHEFFIELD CITY COUNCIL

Scheme
EDWARD STREET PARK

Drawing Title
PROPOSED TRAFFIC REGULATIONS
Traffic Regulations Drawing

Drawing No.
TR/20/09/ESP

Scale
NTS **A4**

0 Millimetres 30

 Date 14.06.11



Club

El Sub Sta

RADFORD STREET

Playground

Hu

19

68 to 70
76 to 78

85 to 87
98 to 100

65 to 67
71 to 75

79 to 84
92 to 97

Edward Street

Flats



109
110

APPENDIX E

Copyright Sheffield City Council. All rights reserved in Chapter IV of the Copyright, Designs and Patents Act 1988 have been generally asserted

This map is reproduced from Ordnance Survey material with the permission of Ordnance Survey on behalf of the Controller of Her Majesty's Stationary Office. © Crown Copyright. Traditional reproduction infringes Crown copyright and may lead to prosecution or civil proceedings. 100/8816, 2008

Key

-  HIGHWAY TO BE CREATED
-  HIGHWAY TO BE CLOSED

PLANNING APPLICATION

SHEFFIELD CITY COUNCIL DEVELOPMENT SERVICES	
Director L STURCH, MRTPI	
SCHEME:	EDWARD STREET PARK
TITLE:	PROPOSED HIGHWAY CREATIONS AND CLOSURES
COMMITTEE:	
SCALE:	1:500 @ A4
Dr:	Ty: Old: Date: Mtr:
LAB:	FEB11
Drawing No:	RPDT/2983/80
CAD FILE NAME:	